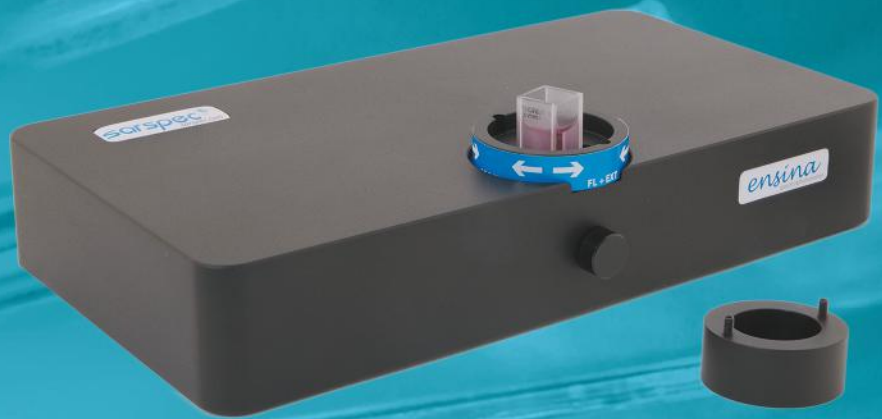


Smart, Affordable, Robust

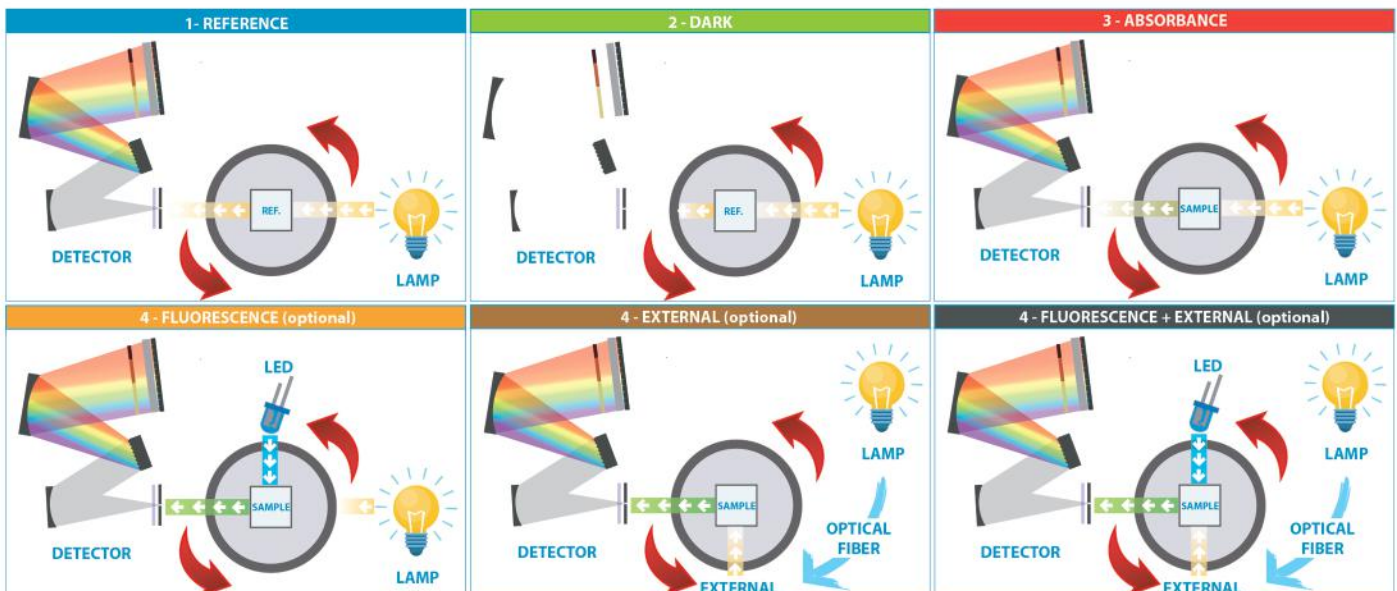
ensina spectrophotometer



- ✓ Absorbance, Transmittance and Kinetics operation modes as standard
- ✓ **Innovative RSpec** – Rotational Spectrophotometer the selection of different techniques and measurement modes
- ✓ Wavelength range from 380 to 1000nm
- ✓ Optional Fluorescence and External Upgrade
- ✓ Software LightScan included
- ✓ Aprox. 1 nm optical resolution
- ✓ USB Powered – fully portable when connected to a laptop
- ✓ Fast: up to 3ms per full spectrum
- ✓ Filter slot for slide filters

Innovative RSpec

Sarspec's new *ensina* is a high performance, smart, robust, flexible, small and fast educational spectrometer with a simple use principle: the RSpec – Rotational Spectrophotometer. With the RSpec principle, the user can select the operating modes and go through different measurement steps by rotating the sample holder trough 4 positions: 1 – Reference; 2 – Dark; 3 – Absorbance / Transmittance; 4 – Fluorescence / External.



Complete solution in the palm of your hand

Extreme flexibility with a system suitable for liquid or solid samples. In the standard configuration you get a spectrophotometer suitable for Absorbance/ Transmittance and Kinetics measurement techniques and software LightScan suitable for Qualitative and Quantitative analysis of your samples. Also, a filter slot is included for the selection of the required wavelength range.

Flexibility in Fluorescence

The optional Fluorescence module offers great flexibility and performance. Using the interchangeable slide LEDs you can easily choose between a large number of available wavelengths for excitation in the UV and Visible ranges.

Couple to external Light Sources or Spectrometers

In every spectrometer you are able to use an external port that can be used to couple via optical fibers the instrument to external devices such as Light Sources and Spectrometers.

Use this port for Reflectance measurements when using the optional solid sample holder and our optional fiber optic coupled Tungsten Halogen Lamp.



PARAMETER	VALUE
WAVELENGTH RANGE	380-1000
OPTICAL RESOLUTION	~1 nm
INTERFACE	USB for data and power and SMA for triggering
SOFTWARE	LightScan (control, acquisition and handling)
DIMENSIONS / WEIGHT	22 x 12 x 6.5 cm / 1.5 Kg
MEASUREMENT MODES	Absorbance / Transmittance / Kinetics / Fluorescence (optional) / External (Optional)

ORDER INFORMATION	
ENSINA	Ensina Spectrophotometer including software
ENSINA + FL	Ensina Spectrophotometer + Fluorescence, including software
ENSINA + EXT	Ensina Spectrophotometer + External Coupler, including software
ENSINA + EXT + FL	Ensina Spectrophotometer + Fluorescence + External Coupler + software
SSH	Solid Sample Holder for transmission measurements
SSH - TOTAL	Solid Sample Holder for Transmissions and Reflection Measurements
LS - W	Tungsten Halogen Light Source for fiber optics
OF-UV-400-050	Optical Fiber, 400um core diameter and 50cm long